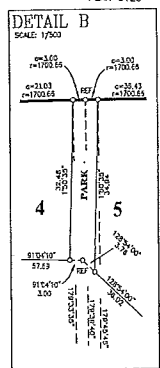
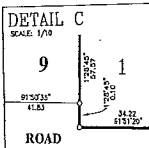
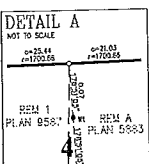
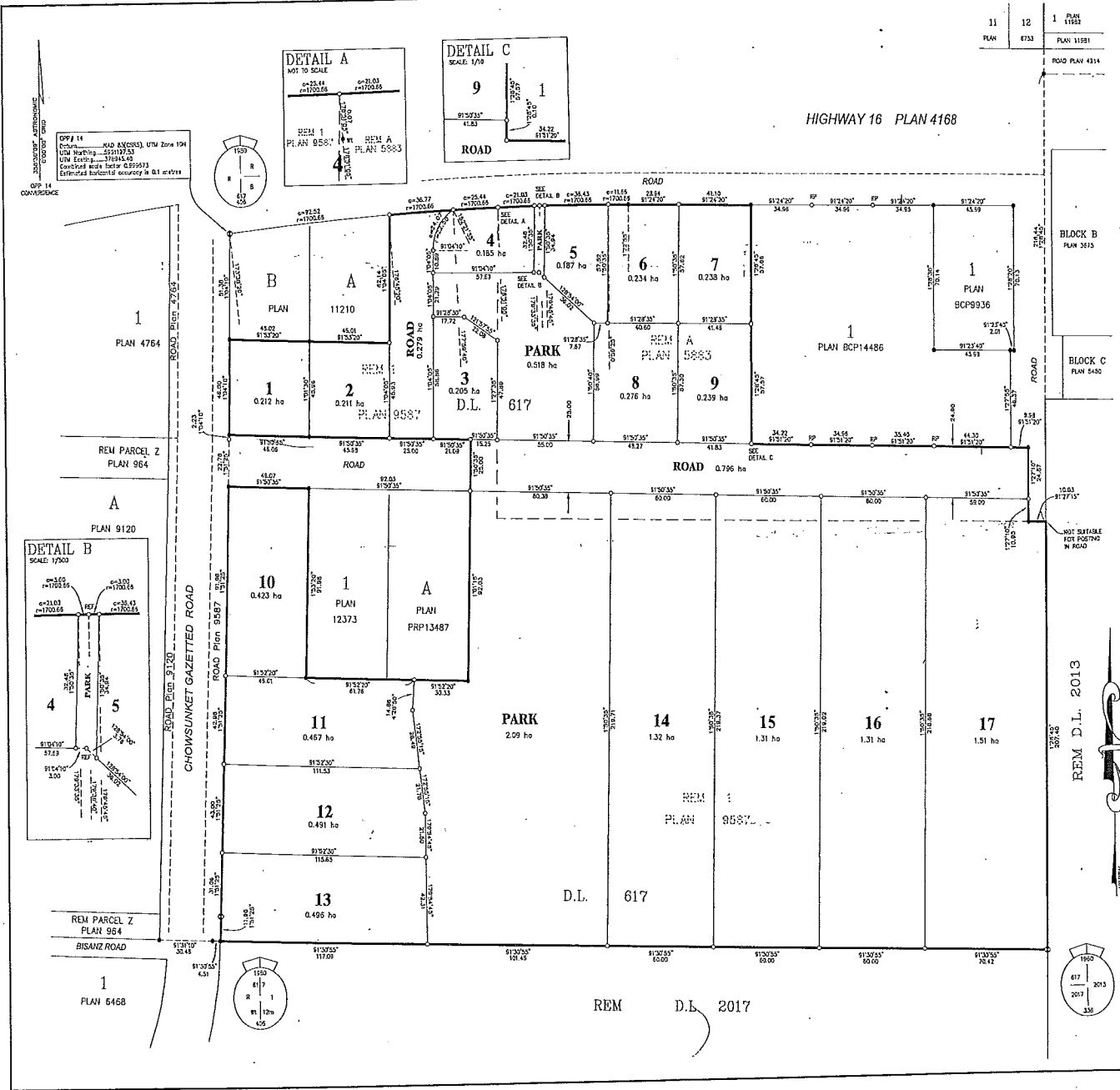


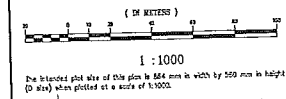
Deposited in the Land Title Office of New Brunswick, B.C. on Feb 20 10.
884206-274292
Registrar

11	PLAN 11552
12	PLAN 11581
13	ROAD PLAN 4314

HIGHWAY 16 PLAN 4168



PLAN OF SUBDIVISION
OF LOT 1 DISTRICT LOT 617 PLAN 9587
EXCEPT PLANS 11210 12373 AND PRP13487
AND LOT A EXCEPT PORTIONS IN PLANS
BCP9936 AND BCP14486 DISTRICT LOT 617
PLAN 5883 ALL IN RANGE 5 COAST DISTRICT.
BCGS 93K.006 GRAPHIC SCALE



The intended plot size of this plan is 84 mm in width by 559 mm in height (D size) when plotted at a scale of 1:1000.

LEGEND: Bearings are N/S/E/W (NS/EW) and are derived from differential carrier phase GPS observations and are referred to the central meridian of UTM Zone 18 North. To obtain local astronomic bearings referred to the meridian through GPR 14, add/subtract 122°31'.

The UTM coordinates and estimated network horizontal accuracy are derived using 8 hours of GPS dual frequency observations and processed using the CGRS-PPW online processing provided by Natural Resources Canada. These results were confirmed by processing the same data with the Leica 93-PPW software to NAD83 LLA ASP WALL (CGRS1703).

This plan shows horizontal ground-level distances. To compute grid distances based on a mean spheroid elevation of 682.37 metres, multiply ground-level distances by the mean combined scale factor of 0.999711.

- Standard Copper Pin Faced (Type 1)
 - Standard Iron Pin Faced (Type 2)
 - Standard Iron Pin Faced (Type 3)
- Note:
This plan shows one or more witness posts which are set during the production of the property boundary unless otherwise noted.

VILLAGE OF FRASER LAKE

Dawn Ward
Municipal Councillor
Dawn Ward
First Name

CONTROLLED ACCESS HIGHWAY APPROVAL
Approved Pursuant to the Land Title Act
by *Elizabeth Little* 2870
Municipal Councillor
Ministry of Transportation and Infrastructure
First Name

Approved under the Land Title Act
by *426 Charlie Rd* 2870
Municipal Councillor
Fraser Lake BC
Approving Officer, Village of Fraser Lake

THIS PLAN LIES WITHIN THE REGIONAL DISTRICT OF BLUEY-HEATHCOCK

I, M.A. Middleth, a British Columbia land surveyor of good standing, in British Columbia, certify that I was present at and personally supervised the survey represented by this plan, and that the survey and plan are correct. The field survey was completed on the 20th day of November, 2009. The plan was completed and checked, and the checklist filed under #104654, on the 10th day of December, 2009.

January 28, 2010
M.A. Middleth
Land Surveying Ltd.
Box 1220
188 Herby, Coquitlam BC
V3J 3J7
B.C.L.S.



REM D.L. 2017

REM D.L. 2013

